



Sanmina India

Hi-Tech Manufacturing Campus

Located in Chennai (India) on 100 Acre site
Opened in 2010

Domestic and Export Markets

Center of Excellence for Electronics Manufacturing

- R&D and Prototyping
- New Product Introduction (NPI)
- Electronics Assembly & Test
- Full System Integration
- Build and Configure to Order

Mission Critical Markets

- Communications Infrastructure
- Cloud/Hyperscale, High Performance Computing
- Medical
- Industrial & Energy
- Automotive, including EV
- Aerospace

Certifications

- ISO 1401
- ISO 9001
- TL 9000 (Communications)
- ISO 13485 (Medical)
- FDA Registration (Medical)
- IATF 16949 (Automotive)
- AS 9100 (Aerospace)



Electronic Assembly Lines



Cleanroom Operations

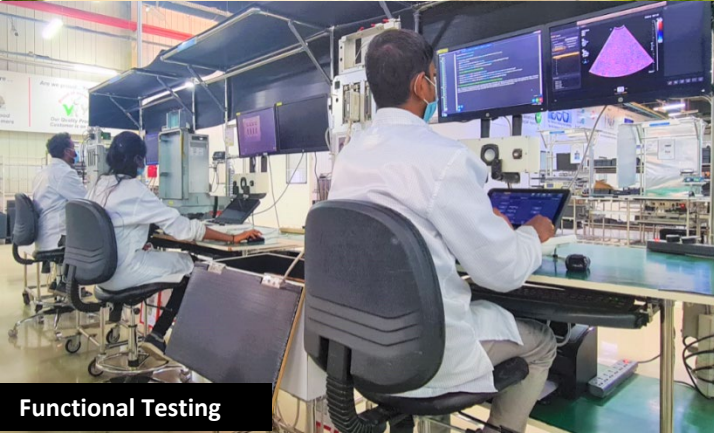


Manufacturing Workcell

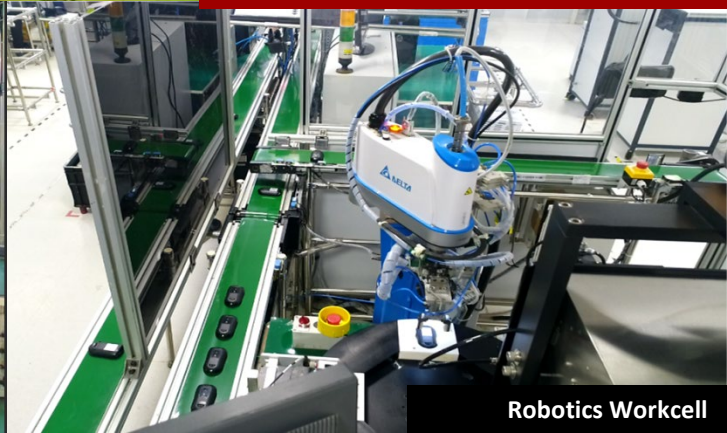
Make in India



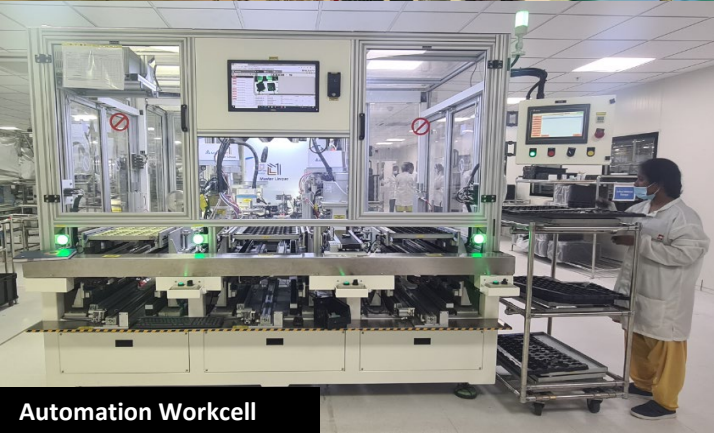
Hi-Tech Manufacturing Campus



Functional Testing



Robotics Workcell



Automation Workcell



Full System Assembly



Reliability & FA Lab



SANMINA

Make in India